

mega-tread stair treads and nosings

GENERAL INFORMATION

Slips and falls are a major public health and safety risk. They are a leading cause of injuries in general and of fatal injury in the elderly, and constitute a significant and costly public health problem. Taking responsibility for your floor's slip resistance can minimise the risk of personal injury and possible litigation, and demonstrates your commitment to health and safety issues. By investing in Megapoxy Hellas anti-slip products you can take advantage of cutting-edge technology that has been developed and tested according to the highest Australian and European standards.

Product description

Mega-Tread safety treads have been designed by Megapoxy Hellas to provide safe non-slip surfaces for both heavy and light-duty applications in both interior and exterior environments, wherever pedestrian safety is of concern. Megapoxy nosings also protect the step edge, always maintaining a trim, sharp profile. Megapoxy safety treads and nosings are available in a comprehensive range of pre-formed aluminium profiles with infilled strips of Mega-Tread™ anti-slip compound. Mega-Tread is also available in trowellable form which can be used to construct safety treads in concrete or stone in situ if required. All products are economical and easy to install.

Mega-Tread safety profiles - features

- Mega-Tread aluminium profiles are lightweight and durable, and available in a standard mill finish. Clear or black anodised finishes are available on request.

- Available in a variety of standard widths and shapes.
- Mega-Tread anti-slip compound (see below) is used for all infills.
- Suitable for indoor and outdoor application.
- Aluminium profiles can be installed on most common substrates using various fixing methods including surface mounted or recessed, using Megapoxy PM/PF epoxy adhesive and/or countersunk screws and plugs, or cast-in-place.
- Fixing holes are provided in the tread at 300 mm centres unless otherwise specified.
- Standard supply length is 5 metres.
- All profiles can be factory cut to size.

Mega-Tread compound - features

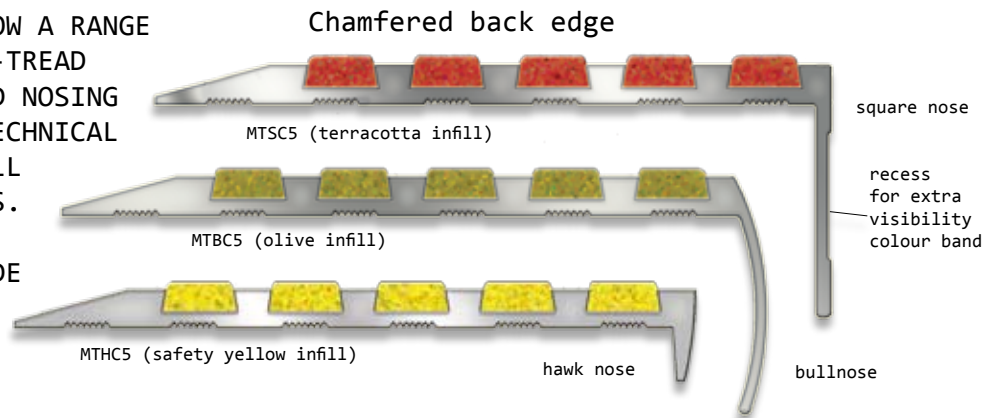
- Mega-Tread anti-slip compound is comprised of granular silicon carbide (the hardest substance known after diamonds) and other mineral infill combined with epoxy-based materials.
- Mega-Tread is supplied in easy to use 1.3 kg kits and can be applied in situ in stone and concrete to create safety stair treads. It is also available as ready-made strips in pre-formed aluminium stair treads and nosings (see above).
- Available in 7 standard colours including safety yellow. The Mega-Tread colour range provides aesthetically pleasing choices to match all surroundings. All RAL colour code colours are available on request.
- Mega-Tread conforms to EU directive 89/654 and Australian Standard AS/NZS 4586 - 2004.

MEGA-TREAD SAFETY PROFILES

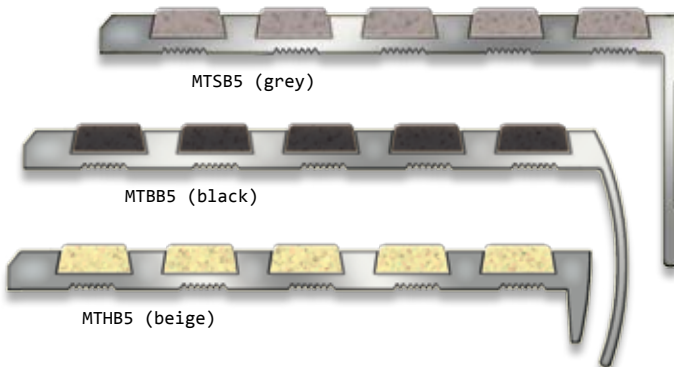
Mega-Tread safety profiles are available in various shapes and sizes according to flooring and installation needs (see page 4 for installation details). Square nose profiles can be provided with a special colour band for extra visibility. Standard

treads are available with 4 or 5 tread infill strips of equal width, or alternatively 4 standard width strips plus a wide front strip. All profiles are lightweight aluminium with standard mill finish or optional anodised finish.

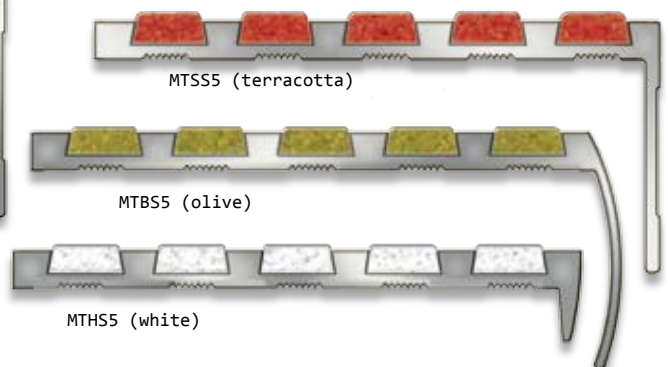
ILLUSTRATIONS SHOW A RANGE OF STANDARD MEGA-TREAD SAFETY TREADS AND NOSING SECTIONS - SEE TECHNICAL DATA TABLE FOR ALL STANDARD PRODUCTS. ANY NEW PROFILE CAN BE CUSTOM MADE TO ORDER.



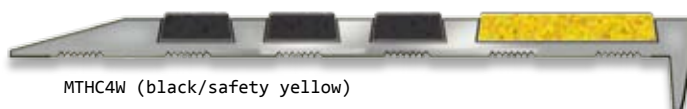
Bevelled back edge



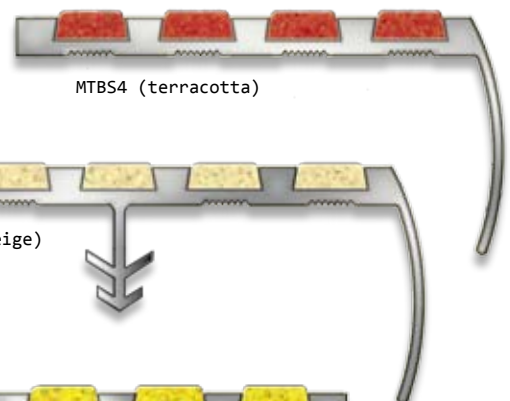
Straight back edge



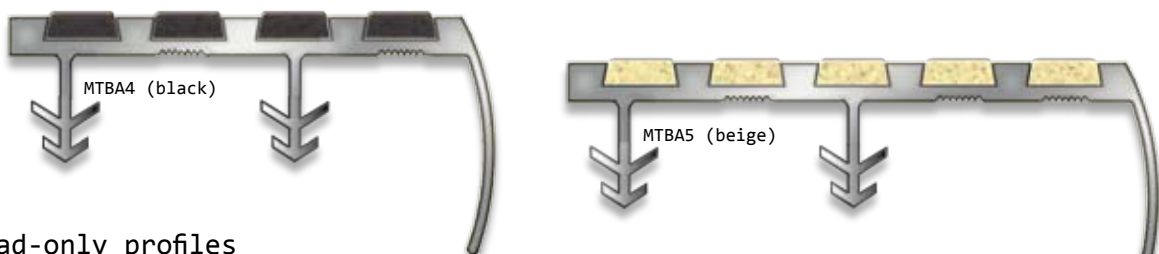
4-strip tread with wide front strip



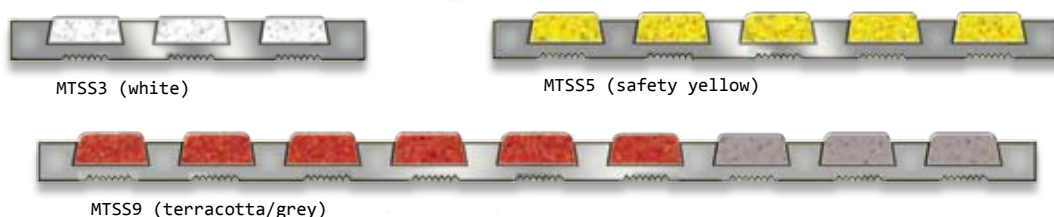
4-strip tread



Cast-in-place



Tread-only profiles



Megapoxy Hellas

31 Adrianou str, 19400 Koropi, Attica Greece, PO 223 Koropi 19400

T +30 210 6625117 F +30 210 6628838

E info@megapoxyhellas.com W www.megapoxyhellas.com

MEGA-TREAD SAFETY PROFILES TECHNICAL DATA

Product no.	Nosing	Back edge	Width	Inserts	Nosing height	Installation
MTSC4	square	chamfered	76	4	36.5	surface mounted
MTBC4	bullnose	chamfered	76	4	36.5	surface mounted
MTHC4	hawk nose	chamfered	76	4	11.5	surface mounted
MTSB4	square	bevelled	61	4	36.5	surface mounted
MTBB4	bullnose	bevelled	61	4	36.5	surface mounted
MTHB4	hawk nose	bevelled	61	4	11.5	surface mounted
MTSS4	square	straight	61	4	36.5	recessed
MTBS4	bullnose	straight	61	4	36.5	recessed
MTHS4	hawk nose	straight	61	4	11.5	recessed
MTSC5	square	chamfered	90	5	36.5	surface mounted
MTBC5	bullnose	chamfered	90	5	36.5	surface mounted
MTHC5	hawk nose	chamfered	90	5	11.5	surface mounted
MTSB5	square	bevelled	75	5	36.5	surface mounted
MTBB5	bullnose	bevelled	75	5	36.5	surface mounted
MTHB5	hawk nose	bevelled	75	5	11.5	surface mounted
MTSS5	square	straight	75	5	36.5	recessed
MTBS5	bullnose	straight	75	5	36.5	recessed
MTHS5	hawk nose	straight	75	5	11.5	recessed
MTSC4W	square	chamfered	90	4	36.5	surface mounted
MTBC4W	bullnose	chamfered	90	4	36.5	surface mounted
MTHC4W	hawk nose	chamfered	90	4	11.5	surface mounted
MTSB4W	square	bevelled	75	4	36.5	surface mounted
MTBB4W	bullnose	bevelled	75	4	36.5	surface mounted
MTHB4W	hawk nose	bevelled	75	4	11.5	surface mounted
MTSS4W	square	straight	75	4	36.5	recessed
MTBS4W	bullnose	straight	75	4	36.5	recessed
MTHS4W	hawk nose	straight	75	4	11.5	recessed
MTBA4	bullnose	straight	75	4	36.6	cast-in-place
MTBA5	bullnose	straight	75	5	36.5	cast-in-place
MTSS3	(tread only)	straight	42	3	-	recessed
MTSS4	(tread only)	straight	56	4	-	recessed
MTSS5	(tread only)	straight	70	5	-	recessed
MTSS9	(tread only)	straight	126	9	-	recessed

NOTES

1. All measurements are given in millimetres.
2. Tread depth of profiles is 5 mm.
3. Chamfers have base length of 15 mm with chamfer at 15° angle.
4. Anchor depth of cast-in-place treads is 15 mm.
5. Tread-only profiles can be used on their own or in combination with straight-back edge nosings for full coverage.
6. Most profiles can be formed with anchoring for cast-in-place installation.

INSTALLATION GUIDE: Mega-Tread safety profiles

Mega-Tread safety treads and stair nosings are easy to install using Megapoxy PM/PF epoxy adhesive and/or countersunk screws and plugs, or cast-in-place, depending on flooring material and tread profile.

Surface mounted and recessed treads can also be installed on most hard surfaces using Megapoxy PM/PF epoxy adhesive on its own, without screws, if required.

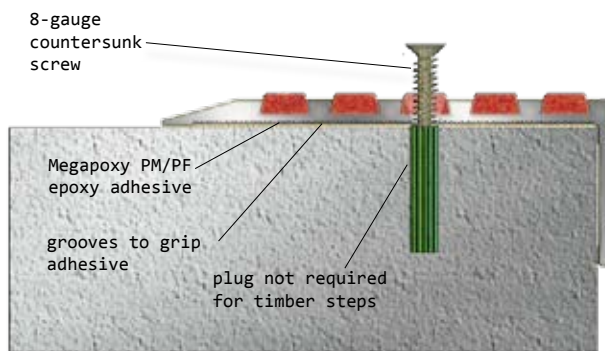
A particular advantage of the Mega-Tread system is that screw heads can be concealed with the application of Mega-Tread anti-slip compound after installation.

Please note that it is imperative that treads are firmly laid in place with no movement.

Megapoxy PM/PF epoxy adhesive

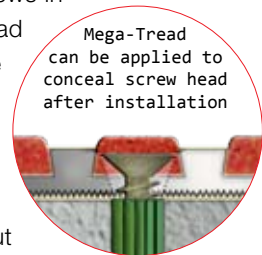
Megapoxy PM/PF is a slow-set adhesive which ensures high bonding strength. It is suitable for interior and exterior use and all weather conditions, and also functions as a sound deadener. Megapoxy PM/PF is flexible to accommodate impact and thermal movements, and is resistant to shocks, alkali and most cleaning chemicals.

1. Chamfered back edge



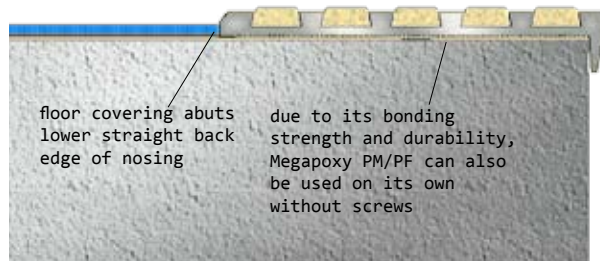
Mega-Tread nosings with chamfered back edge can be mounted on i. hard surfaces such as stone, concrete, timber, tile and vinyl, and ii. soft flooring such as carpet. The chamfer provides a smooth transition from floor to tread.

i. Hard surfaces. Mark holes for drilling at 300 mm centres as per the pre-drilled treads. Insert plugs for screws (not required for timber surfaces). Apply Megapoxy PM/PF to the flooring surface and set the tread in place. The tread is further secured with 8-gauge countersunk stainless steel screws in the pre-drilled holes. Mega-Tread trowellable compound can be applied in the cavity above the screw head to conceal the screws.



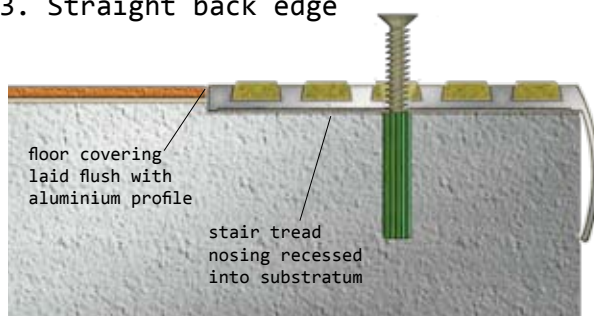
ii. Carpeted surface. As above but screw-only fixing without adhesive. Care should be taken when drilling holes through the carpet. Thick carpet pile can be cut back under the tread to facilitate fixing.

2. Bevelled back edge



Mega-Tread nosings with bevelled back edge are suitable for surfaces covered with vinyl or carpet. The vinyl/carpet floor covering is cut at the point where it abuts the lower (straight) back edge of the nosing. The nosing is fixed in the same method outlined above for chamfered back-edge nosings applied to a hard surface. The bevelled upper back edge of the nosing provides a smooth transition from the vinyl/carpet to the tread.

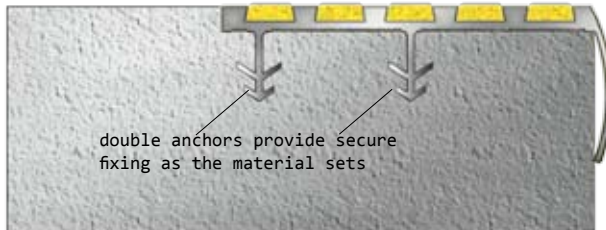
3. Straight back edge



Mega-Tread straight back-edge nosings are designed for installation in a pre-formed or cut recess in hard surface of material such as stone, concrete or timber. For installation on a flooring substratum that is to be covered in another material, the depth of the floor covering (e.g. tiling) should be taken into consideration when forming the recess. The nosing is fixed into the recess with the same method outlined above for chamfered back-edge nosings applied to a hard surface. The top of the aluminium should lie flush with the floor surface so that the inserts protrude slightly.

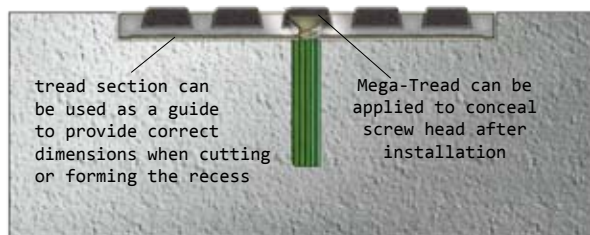
INSTALLATION GUIDE: Mega-Tread safety profiles

4. Cast-in-place



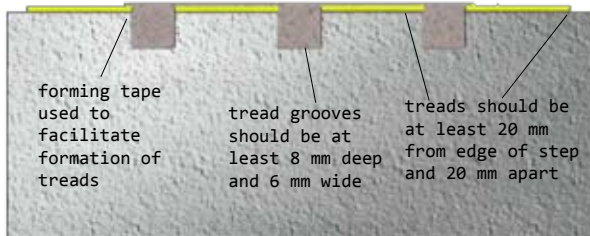
Mega-Tread cast-in-place treads and nosings are designed for use in wet concrete or other topping with requisite depth. Allowance should be made for the depth of any floor finish (tiles, stone etc.) to be used. The treads are installed into the wet topping during construction and fixed in place by the double anchoring as the material sets. Most products in the Mega-Tread range of safety treads and nosings can be provided as cast-in-place extrusions.

5. Tread-only



Mega-Tread tread-only profiles can be used on their own on steps and other floors, or in combination with Mega-Tread straight back-edge nosings to provide full step coverage. If the tread is used on its own, particular care must be taken with sizing the recess and it is advisable to use a tread section as a guide. when cutting or forming the recess. The recess must be placed at a minimum of 20 mm from the edge of the step. The nosing is fixed into the recess with the same method outlined above for chamfered back-edge nosings applied to a hard surface.

INSTALLATION GUIDE: Mega-Tread anti-slip compound treads



Mega-Tread, the heavy-duty extra-strength compound used for the inserts in Mega-Tread safety treads, is also available in trowellable form and can be used as a coating on most hard surfaces or for the construction of safety treads directly into stone or concrete.

To form Mega-Tread safety treads in situ, cut or form grooves with depth of at least 8 mm and width of at least 6 mm, in the floor surface. Use of at least two strips 20 mm apart and a minimum of 20 mm from the edge of each step, is recommended. Cover the spaces between the grooves and the edges with 2 or 3 layers of forming tape provided by Megapoxy Hellas in order to protect the floor surface from soilage and facilitate the formation of the tread. Apply Mega-Tread anti-slip compound according to the Mega-Tread kit instructions, so that it is flush with the forming tape. Tack-free drying time is 4 hours at 25° C; cure time is 24 hours at 25° C. Forming tape should be removed before the compound is touch dry.

MEGA-TREAD COMPOUND AND SAFETY TREADS COLOUR GUIDE

Mega-Tread is available in the following standard colours: safety yellow, beige, olive, black, terracotta,

grey and white. Any colour from the RAL colour code range is also available on request.

safety yellow



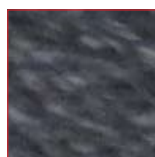
beige



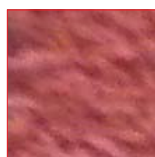
olive



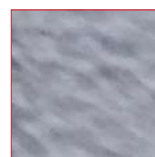
black



terracotta



grey



white

